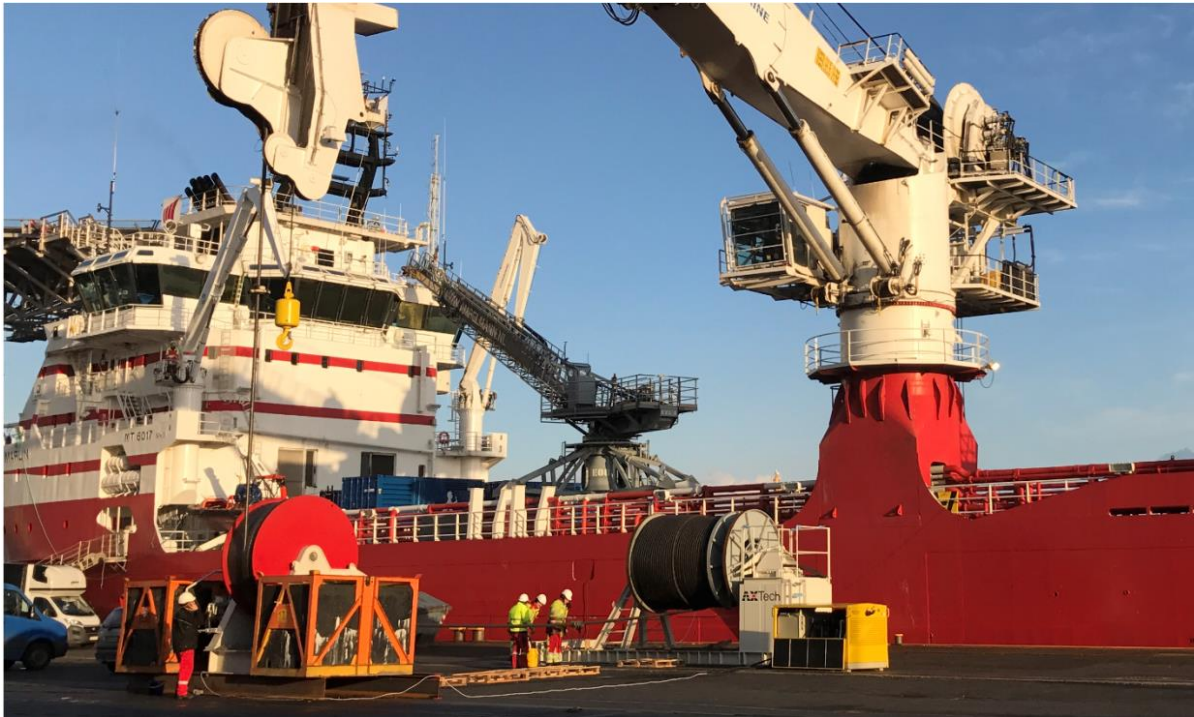


AXTECH WIRE SPOOLING SERVICES

AXTech is a worldwide supplier of lifting and material handling solutions for use in harsh marine environments. As part of our portfolio, we also provide installation, commissioning and testing services. The AXTech wire spooling service is a new and rapidly growing segment in our service portfolio.



The AXTech wire spooling equipment and engineers operate out of AXTech Polska offices in Gdynia, Poland. But due to a very flexible spooling kit, the service is offered world-wide.

The spooling kit is easy to transport by a single truck, and operated on site by AXTech's experienced service engineers.

In addition to wire spooling, AXTech also provide Magnetic Rope Testing (MRT). Size range of wire ropes: $\varnothing 30$ - $\varnothing 90$ mm.



AXTech spooling equipment

Installing steel wire ropes in multi-layer systems requires qualified personnel and accurate equipment with proper tension during the entire spooling operation. AXTech spooling system is designed especially for this type of operations, and is based on the vast experiences AXTech has gained with lifting equipment over the years.

Spooler winch

The spooler may act as a spooler for lower tension wire spooling or as the back tension unit for the capstan winch. The spooler is hydraulic and may be operated in both directions, both as a winch and as a tensioner. Operation is proportional from 0-100%, speed or tension.

- Max. reel weight: 60t
- Max. reel diameter: 3500 mm
- Max. reel width: 5400 mm
- Max. back tension: 35kNm (Proportional control)
 - Approximately 2t at 3,5m reel diameter
 - Approximately 5t at 1,5m reel diameter

Capstan winch

The capstan is required when higher rope tension is required. The winch is hydraulic and may be operated in both directions, both as a winch and as a tensioner. Operation is proportional from 0-100%, speed or tension.

- Back tension: 0-25t

Hydraulic Power Unit

The winch power supplies are provided by a diesel driven HPU, enabling spooling without external power supply. The HPU is equipped with an oil cooler, enabling continuous high performance over longer period of time

